

MUNDIJONG PRIMARY SCHOOL



KINDY – PRE PRIMARY INFORMATION MORNING
Wednesday 17th November 2021
9.00am - Library

Kindergarten & Pre Primary Information Booklet 2022



2022 Kindy & Pre-Primary Information Booklet

Please retain this 2021 Handbook as it contains information that you need during the year.

Welcome to Mundijong Kindy & Pre-Primary Class of 2022.

The Kindy & Pre-Primary classes commence at **8.50am**. The classrooms will be open from **8.40am - 3.00pm**.

Arrivals

Parents are requested to bring their children into the room and complete their name card, puzzle, a table activity or read a book with them. This enables us to say hello and discuss any daily issues that may need attending to.

Departure

The children can be collected from the door at 3.00pm. If another person other than the parents or legal guardian is going to collect the child a note must be written to identify the person. If another person is going to regularly collect your child one note will be sufficient to cover the whole year. ***Older siblings will not be given the care of Kindy & Pre-Primary children. If more than 10 minutes late your child can be collected from the school office.***

Attendance – When it comes to attendance, everyday at school matters!

Please inform Mundijong Primary School Phone: **9526 7150** if your child will be away for extended periods. You will receive a text through our messageyou system, please respond with a reply and this will be recorded in our system. A note of absence is a legal requirement when a child is absent. Late arrivals to school must collect a late note from the school office. If you need to pick up your child early a note must first be collected from the school office.

Health

Please keep us up to date with matters concerning your child's health and well-being. Often a simple change may be enough to cause an unhappy child. Children should be kept at home when not well or displaying obvious symptoms of a virus, cold or upset stomach. Infections can spread very quickly in the Kindergarten & Pre-Primary environment. Asthma and allergies require the parent to complete an Emergency Action Plan Form. These forms can be obtained from the school office. Contact details (e.g. phone and mobile) must be kept up to date with the office and class teacher. Immunisations must be kept up to date and the Immunisation History Statement given to the school office.

Infectious Diseases

For certain diseases, children have to be excluded for a specific time. Please refer to the infectious diseases information in the Mundijong Primary School Information Booklet.

Your Child Will Require

- ❖ **School bag** – Please mark child's name clearly on the rear or side of the bag. (Please note children find it difficult to pack small bags and fit in all their equipment)
- ❖ **Drink bottle** – marked with child's name clearly on the front.
- ❖ **Hat** - marked with child's name on the inside. School preferred hats available through P&C uniform shop.

Library Bag

Please write the student's name clearly on the outside of the Library Bag, available through the P&C uniform shop.

Crunch & Sip – (separate to recess)

- ❖ Every day the students will be eating crunch and sip, this is to provide the students with a brain break. The food needs to be easy to eat, this can be carrot, apple, celery, pear, grapes etc.

Recess

- ❖ Please pack a healthy snack for your child to eat at recess. This may be fruit or a substitute such as dried fruit, fresh fruit, vegetables, cheese, carrot sticks, popcorn and other healthy nibbles.

Lunch

- ❖ Lunch Box – all lunch that is not eaten will be returned in their lunch container each day so that you can monitor the amount of food your child is eating.

Playground

- ❖ Excluded before & after school.

Please encourage your child to unpack their own school bags on arrival at school. It is important that the children become independent, although they may still require you to remind them of what they need to do.

**Please check for any notes or messages each day in the
Communication Diary.**



What Your Child Will Do At Kindy & Pre-Primary

The staff at Mundijong Primary School Kindy/Pre-Primary aim to provide a happy, relaxed and stimulating learning environment where all the children are given equal opportunity to encounter new challenges and experiences. The programme is based on principles that children learn through active play and that they all develop at a different rate. We aim to cater for their individual needs and interests. A thematic approach is used, as it incorporates the key learning areas as well as immersing the children in the topic. Language and Numeracy form a large part of the programme. Each child will be involved in carefully planned play activities.

Children's Clothing

Kindy & Pre-Primary children are encouraged to wear school uniform.

It is School Policy for students to wear hats at school – “No Hat No Play” rule applies.

As a safety precaution suitable shoes must be worn at Kindy/Pre-Primary. These may include sandals, sneakers and other closed in footwear (*non-slip soles*) that the children can put on independently (*No thongs, gumboots or backless shoes please*).

Please include a spare set of clothes in case of little accidents. Have them in a plastic bag in their everyday bag throughout the year. Accidents can occur when children are engaged in activities.

PLEASE ENSURE THAT ALL ITEMS OF CLOTHING, INCLUDING SHOES ARE MARKED CLEARLY WITH YOUR CHILD'S NAME.

On the First Day...

- ❖ Be organised, have the child's clothes, shoes, water bottle and bag ready, so that it is not a rush in the morning.
- ❖ Write your child's name on their bag, hat, food containers and water bottle.
- ❖ Establish a routine right from the start. Give yourself enough time to get ready. Do not panic if you are running late.
- ❖ Provide a nutritious breakfast. It has been proven that children who eat a healthy breakfast have better concentration skills.
- ❖ Introduce your child to the teacher, who will show you where to place their bag, water bottle and fruit.
- ❖ Show them where the toilets are located, and then explore the room.
- ❖ Finally complete an activity, puzzle or read a book with your child and if they are ready leave quietly. If they are not ready then you are welcome to stay until the time is right, the teacher will let you know when.
- ❖ Collect your child on time, as they will have lots to tell you.
- ❖ Stationery - please write name on all items and bring in a bag with their name on.

Ways You Can Help Your Child at Kindy & Pre-Primary

- ❖ Read books with them each night.
- ❖ Encourage them to write their own name. Please only use capital letters for the start of names.
- ❖ Count numbers. Sing songs that use numbers, play number games, nursery rhymes, etc. Talk about the name of each number when looking at the numerals.
- ❖ Practice fine motor skills using scissors to cut out, or drawing pictures that are dotted which the children trace over. Use tweezers to get beans out of a container. Draw pictures by using shapes.

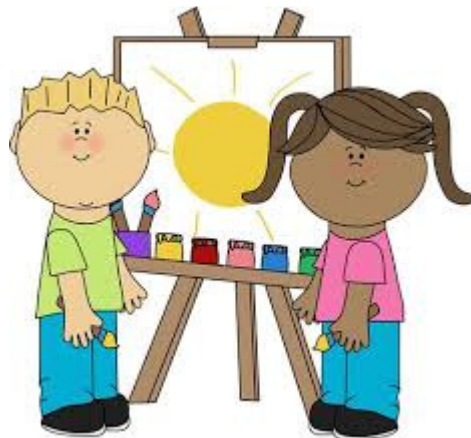


What you can do at home.

- ❖ Practice separation. It is important for your child to learn to be independent. Some children find the initial separation each day challenging. The best thing you can do is **kiss and leave**. Children tend to settle within 5 minutes. Parents would be contacted if this doesn't happen.
- ❖ Encourage your child to be responsible for their belongings.
- ❖ Develop their language, listening and concentration skills. Read stories to them, play memory games, sing songs together.
- ❖ Develop their numeracy skills. Singing counting songs, playing matching games.
- ❖ Help your child to develop a healthy self-esteem, so that they will be able to face minor problems and meet new challenges.
- ❖ Teach your child to respect others and their possessions. The hardest thing for a child to do is to share their space and often their belongings.
- ❖ Maintain a positive approach towards school.

We encourage parents to discuss their child's progress regularly with the teacher. Please inform us as soon as possible of any issues/ incidents that may affect your child's learning or wellbeing to school.

We look forward to sharing your child's learning experience ensuring a sound foundation for future schooling.



NSW Foundation Font

A a B b C c D d E e
F f G g H h I i J j
K k L l M m N n O o
P p Q q R r S s T t
U u V v W w X x Y y
Z z

1 2 3 4 5 6 7 8 9 0

